

# PHILIPPINE FRAMEWORKS ON MATERNAL NUTRITION AND COMPLEMENTARY FEEDING





## LANDSCAPE ANALYSIS OUTPUTS

- In addition, two narrative documents called **FRAMEWORKS FOR ACTION** that review the key predictors for improving CF and MN have been produced.
- A core group of key stakeholders has identified a **SET OF PRIORITY ACTIONS** that will be most effective in improving CF and MN in the country. Core group meetings were conducted from June-August 2019.

# Actions to improve Complementary Feeding in the Philippines

## OVERARCHING

**Planning and Financing:** Strengthen national and local health and nutrition investment planning and financing through adoption of national policies and alignment of national and local investment plans with the PPAN

**Monitoring and Evaluation:** Monitor and evaluate all related initiatives to complementary feeding Program: Scale-up dietary supplementation in children 6-23 months

**SBCC:** Develop a comprehensive SBCC campaign strategy including social media for complementary feeding that can be modified and adopted by the local government

**R&D:** Conduct research to develop evidence-based policies, standards, and guidelines relating to CF for inclusion in related research agenda



The East Asia Regional Action Framework for Complementary Feeding was developed through a consultative workshop January 22-25th with UNICEF, World Health Organization, World Bank, Helen Keller International, Global Alliance for Improved Nutrition, Save the Children, Alive & Thrive, Nutrition International, Food and Agriculture Organization, World Food Programme, Mahidol University, and Nutrition Center of the Philippines.

# Actions to improve Maternal Nutrition in the Philippines

## OVERARCHING

Program: Support implementation of RA No. 11148: Strengthened integrated strategy for MNCHN in the First 1000 Days of Life

Monitoring and Evaluation: Include maternal nutrition indicators in routine and survey data to monitor progress

SBCC: Develop a comprehensive SBCC campaign strategy including social media for maternal nutrition that can be modified and adopted by the local government

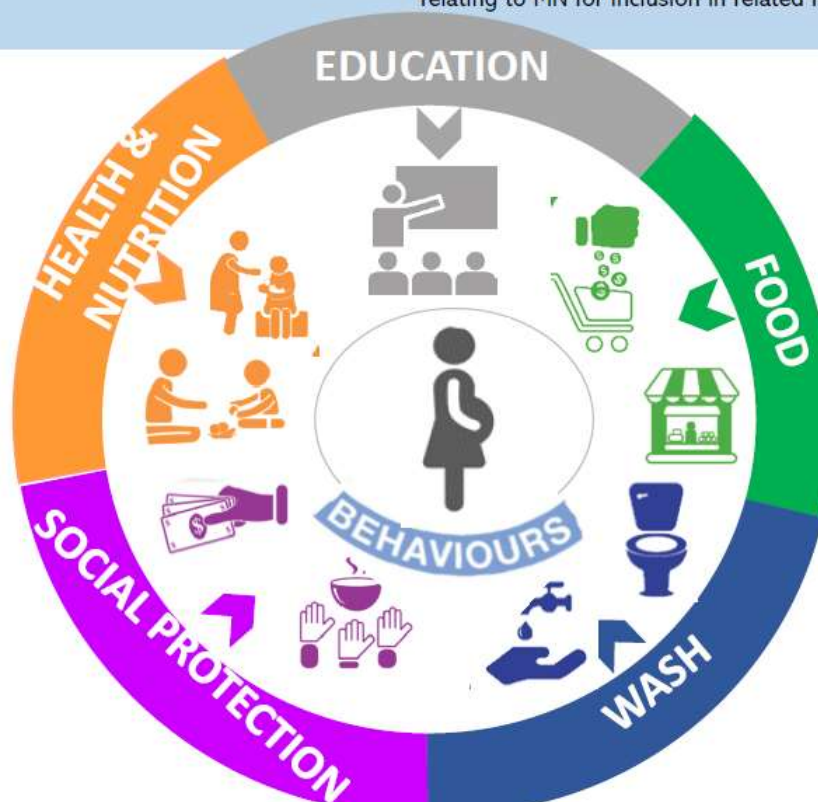
R&D: Conduct research to develop evidence-based policies, standards, and guidelines relating to MN for inclusion in related research agenda

### HEALTH system:

- Ensure inclusion of maternal nutrition services from pre-pregnancy up to postpartum in PHIC benefit packages
- Implement mandatory assessment and monitoring of the nutritional status of pregnant women
- Improve the procurement, storage, distribution, delivery and use of micronutrient supplements for pregnant and lactating women
- Review and assess adoption of MMS for pregnant and lactating women
- Strengthen community support systems through capacity building of BHWs, BNSs, mother support groups and regular home visits and supportive supervision of food and nutrition, WASH, and SWM practices

### SOCIAL PROTECTION system:

- Use social protection programs e.g. 4Ps, KALAHI CIGDS to improve access to the integrated maternal services package



### EDUCATION system:

- Strengthen universal IFA supplementation for all adolescent girls
- Review and integrate health and nutrition including RH concepts in K-12 curriculum

### FOOD system:

- Strengthen legislation to control the marketing of unhealthy foods, improve nutrition labeling and support reformulation
- Improve food access at the household level through home gardening and small animal dispersal

### WASH system:

- Provision of safe water and sanitation facilities
- Integrate environmental hygiene into WASH services



**Copy of documents may be  
downloaded from the following link:**  
**<http://bit.ly/cfmnframeworks>**



## OBJECTIVES OF THE ACTIVITY

1. Highlight the importance of CF and MN in the Philippines
2. Disseminate the PH country profiles and Frameworks for Action on CF and MN
3. Establish integration of priority actions into existing structures and programs
4. Identify key players who will take responsibility for leading implementation of the priority actions
5. Solicit commitment of each agency to improve MN and CF in the PH



## PARTICIPANT PROFILE

- A total of 40 participants attended the event
  - **Government agencies:** DOH, DILG, FNRI-DOST, DSWD, FDA, ECCD Council, NAPC, Office of the CabSec
  - **NGO:** IIRR, PLCPD, WFP, FAO, Alive and Thrive, World Vision, NI, NCP
  - **Others:** Alcanz







## Program of activities

1. Introduction of CF and MN Regional Framework
2. MN and CF in the PPAN 2017-2022
3. National IYCF Strategic Plan 2019-2030
4. Presentation of Priority Actions on CF
5. Workshop

\*Discussion on MN not done  
due to lack of time)



## EVENT HIGHLIGHT : Participant Activity

- For each priority action, individual opportunities, challenges, and next steps for the implementation of priority actions were identified by the participants.



## Complementary Feeding Priority Actions

### OVERARCHING ACTIONS: SBCC



#### 1. *Develop a comprehensive SBCC campaign strategy including social media for CF that can be modified and adopted by LGUs*

- CF SBCC as a component of PPAN, IYCF Strat Plan (NNC, DOH)
- DOH-HPCS to Health Promotion Bureau as an opportunity (DOH)
- Organization of SBCC experts to develop the SBCC plan (NNC)

Update

- ✓ DOH-HPB is developing the Health Promotion Framework Strategy
- ✓ NNC organized TWG on Nutrition Promotion for Social and Behavior Change
- ✓ ComPlan on IYCF developed
- ✓ Ongoing social media campaign on CF (FB F1K PH)

## Complementary Feeding Priority Actions

### FOOD SYSTEM ACTIONS FOR CF



#### 2. *Adopt, implement, and enforce legislation to control the marketing of unhealthy foods to children*

- Strengthen policies on nutrition labelling including menu labelling
- Legislation on marketing of unhealthy foods to children (NNC)
- Develop basis for classifying unhealthy food and beverages

Update

- ✓ Filed House Bill 6357 on Menu Labelling in Food Service Establishments
- ✓ On-going development of the Philippine Nutrient Profile Model as basis for regulating marketing
- ✓ On-going discussion between NNC and ImagineLaw for Technical Assistance

## Complementary Feeding Priority Actions

### FOOD SYSTEM ACTIONS FOR CF



### 3. *Improve food access at the household level through home gardening and small animal industry*

- Integrate nutrition in agriculture plans through DA and DILG for LGUs, e.g. seed diversification for diet diversity of CF (DA, DILG)
- Address lack of nationally coordinated program on home gardening

Update

- ✓ DA developed Agriculture Road Map that includes Plant Plant Plant program
- ✓ NAPC Integrated Community Food Production

## Complementary Feeding Priority Actions

### HEALTH SYSTEM ACTIONS FOR CF



#### 4. *Strengthen community support systems through capacity building of BHWs, BNSs, CDWs, and regular home visits and supportive supervision of food and nutrition, WASH, and SWM practices*

- Systematize recruitment, training, mentoring of mother support groups and inclusion in service delivery network and in PhilHealth under UHC (DOH)
- Online training scheme to capacitate workers (DOH)

Update

- ✓ Online volunteer support groups provided support during pandemic lockdown
- ✓ Roll-out trainings on IYCF



## Complementary Feeding Priority Actions

### **WASH SYSTEM** ACTIONS FOR CF

5. *Provision of safe water and sanitation facilities*
6. *Integrate environmental hygiene into WASH services*
  - Need synergy among agencies with DOH-Environmental Health Office and DILG as key actors on WASH
  - Integration of WASH in SBCC, IYCF counselling, guidelines for community workers

Update

- ✓ WASH integrated in Idol ko si Nanay learning module

## Complementary Feeding Priority Actions

# **SOCIAL PROTECTION SYSTEM**

## **ACTIONS FOR CF**



### *7. Provision of micronutrient supplements and fortified complementary food to children 6-23 months old in poor families*

- No national investment in DSP for 6-23 months and pregnant and lactating women; advocacy to LGUs needed
- DOH investment in micronutrient powder but address distribution issues
- Tools and guidelines in providing CF to target beneficiaries

Update

- ✓ DSP Guidelines being finalized
- ✓ Continuing advocacy to LGUs to invest in DSP for P/L women, 6-23 mos.



## MOVING FORWARD

- Development of F1k Strategic Framework
- Generating commitments for RA 11148 implementation
- Updating of the PPAN
- Strategies under the new normal
- LGUs are the key!